

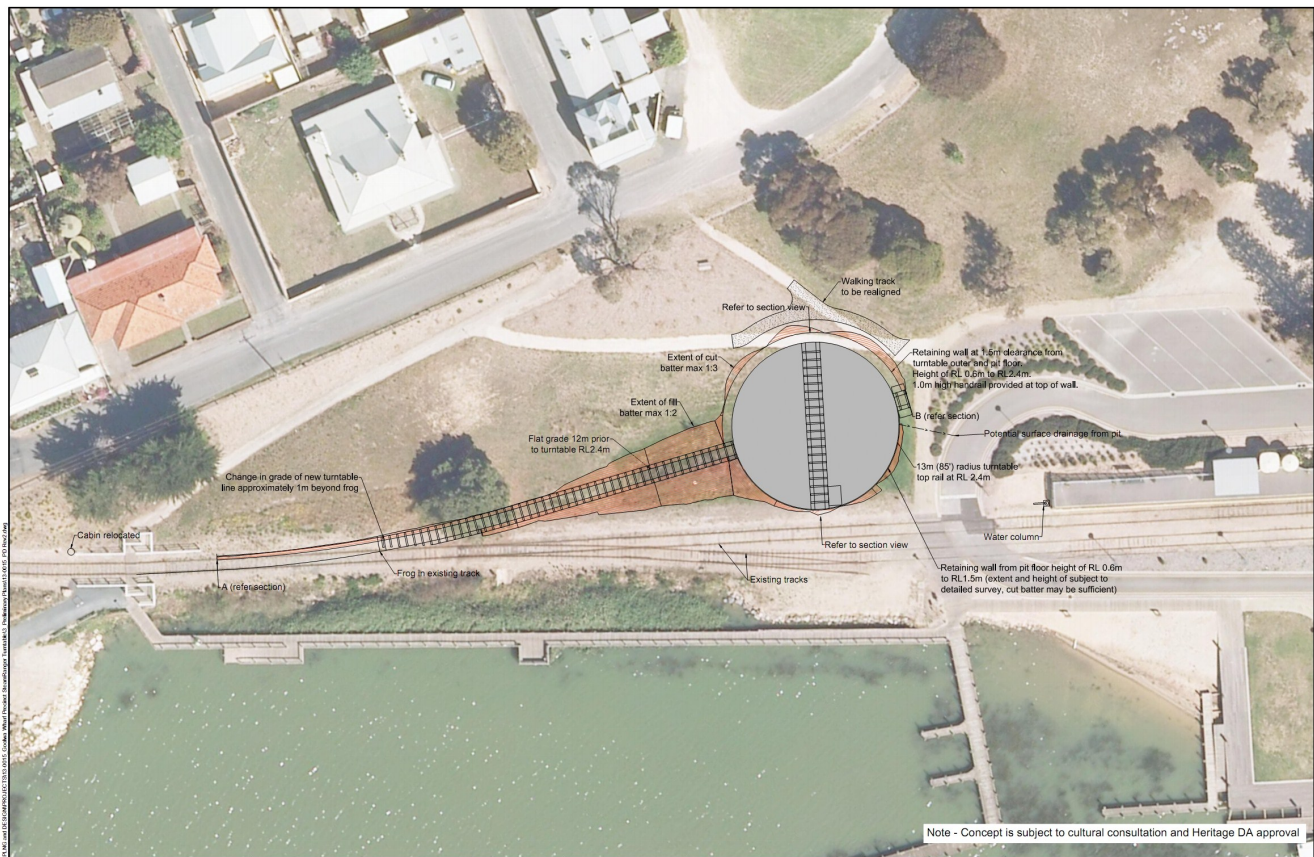
Fact Sheet - Site 7 Steamranger Railway Turntable



SteamRanger, operates steam and diesel hauled heritage railway services from the historic 1915-era Goolwa Railway Station. The Cockle Train services are the most popular, with passenger journeys undertaken throughout the year.

Steam locomotives have proven to be a huge drawcard for tourists and visitors to the South Coast. In a partnership with Alexandrina Council, SteamRanger has a plan and vision to enhance visitor experiences by implementing upgrades providing a better understanding of a working rail yard of the past.

In addition a water column, rescued from another abandoned station, will be erected at the western end of the station platform. This will allow steam locomotives to take on water, rather than at the Goolwa SteamRanger Depot. An original train order semaphore signal has been refurbished and will be re-erected on the platform near the Stationmaster's office. Other proposed improvements include a hand-operated crane which has been obtained from a Yorke Peninsula rail yard to be repainted in heritage colours and erected on the original concrete base behind the freight shed, now occupied by the Steam Exchange Brewery.



1 26/07/11 TURNTABLE SHIFTED AND DEAD END BONG REMOVED 2 26/07/11 LOCATION OF FROG AND CHANGE IN GRADE ADDED 3 21/05/11 ISSUE FOR COMMENT REV DATE DESCRIPTION		FOR COMMENT		ALEXANDRINA COUNCIL Planning and Development 11 Cadell Street Goolwa SA 5214 T 08 8555 7000 F 08 8555 3603 E alex@alexandrina.sa.gov.au	PROJECT Wharf Precinct, Goolwa SteamRanger Turntable TITLE Concept Plan	PLAN #	
		APPD -	DATE 26/07/11			13-0015_AP	
		DESIGN JR	DRN -			SHEET	01
		REVISION MGA 94	REP DATE AHD			REV	2

During the last five years SteamRanger has carried out a number of aesthetic upgrades around the Goolwa Railway Station. The 'non-traditional' sponsorship signage has been removed, picket fencing erected and the station building reclad and painted with the approval of Council's Heritage Architect. Lighting columns on the platform will soon be fitted with appropriate lamps.

For the past 18 months Alexandrina Council staff in conjunction with SteamRanger Historic Railway representatives have explored the opportunity of installing a railway turntable and viewing platform west of the existing Goolwa railway platform.

11 Cadell Street (PO Box 21) Goolwa SA 5214
www.alexandrina.sa.gov.au

T 08 8555 7000 F 08 8555 3603 E alex@alexandrina.sa.gov.au

The construction of a 26 metre diameter, electric turntable will allow turning of all the SteamRanger locomotive fleet, including the massive, 200 tonne '500' class 'Sir Malcolm Barclay-Harvey' and its tender. Based on the popularity of the Victor Harbor turntable it is anticipated that the construction of an additional turntable at Goolwa will be a significant drawcard for tourists and railway enthusiasts. The implementation of a turntable at Goolwa will also replace the need for trains to travel out to the Goolwa Steamranger Depot to uncouple and turn around before returning to the Goolwa platform. This will avoid the lull in activity around the station 'between trains' thereby retaining visitors to the area and encouraging them to visit the many other attractions within the Wharf Precinct.

The turntable is proposed to be situated in low-lying land adjacent to the south-western end of the station platform. With sufficient coal on board for the day's running and water available, the locomotives can be turned at the station. A viewing platform will be constructed on the embankment above the turntable allowing spectators a safe and comfortable position to view trains on the turntable and witness activities adjacent to the railway platform.

In the longer term, it is proposed to construct a dead-end siding track on the north-western side of the existing station platform which will permit a railcar to take on passengers for trips to Strathalbyn and Currency Creek, at the same time as the Victor Harbor train is in the station. In addition, the pedestrian crossing to the Brewery will be fitted with the last remaining 'wig-wag' warning bell and sign in South Australia as a novelty attraction.



Left - Steamranger at the Goolwa Station - Photo courtesy of Peter Michalak - 'Steamfest 2012'

Below - a typical example of a Railway turntable in action - Photo courtesy of Maikha Ly - 'Wings and Wheels'

